

BANDSAW BLADES  
AND BANDKNIVES  
FOR THE FOOD INDUSTRY



**ULTRA**

RICHARD SCHMIDT SÖHNE GMBH & CO. KG



## Butcher bandsaw blades B+S ULTRA

profile grinded, tooth tips hardened

range of application	<b>meat and bones</b>
width	<b>12,50 mm, 15 mm, 16 mm, 19 mm, 20 mm</b>
thickness	<b>0,40 mm, 0,45 mm, 0,50 mm, 0,56 mm, 0,60 mm</b>
tooth	<b>B 6 mm = 4 tpi</b>

range of application	<b>meat and bones</b>
width	<b>12,50 mm, 15 mm, 16 mm, 19 mm, 20 mm</b>
thickness	<b>0,40 mm, 0,45 mm, 0,50 mm, 0,56 mm, 0,60 mm</b>
tooth	<b>B 8,50 mm = 3 tpi</b>

## Carcass splitting bandsaw blades

profile grinded, tooth tips hardened

range of application	<b>splitting of pigs and cattle</b>
width	<b>19 mm</b>
thickness	<b>0,56 mm</b>
tooth	<b>B 8,50 mm = 3 tpi</b>

## Ultra Plus R

profile grinded, tooth tips hardened

range of application	<b>splitting of pigs and cattle</b>
dimensions	<b>16 x 0,50 mm, 16 x 0,60 mm, 19 x 0,56 mm</b>
tooth	<b>raker tooth</b>

## Bandsaw blades for fish

profile grinded, tooth tips hardened

range of application	<b>frozen fish</b>
width	<b>16 mm</b>
thickness	<b>0,36 mm</b>
tooth	<b>B 8,50 mm = 3 tpi</b>

tuna **35 oder 50 x 0,80 mm – 2 tpi**

Other dimensions on request!

# Bandknives for cutting

weak meat and fish like poultry, rabbit, salmon etc.



**smooth cutting edge**

**16 mm, 20 mm** width

**0,45 mm** thickness

**convex cutting edge**

**16 mm, 20 mm** width

**0,45 mm** thickness

**concave cutting edge**

**16 mm, 20 mm** width

**0,45 mm** thickness



# Slicer - bandknives for cutting

ham, bacon, salami, vegetables, cheese, salmon etc.  
for machines like Grote, Kaufler etc.

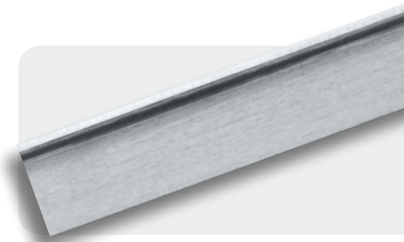
**smooth cutting edge**

**12,50 x 0,45 mm**

**double bevel with pre bevel on one side**

**2 x grinded**

**hardened cutting edge**



**serrated cutting edge**

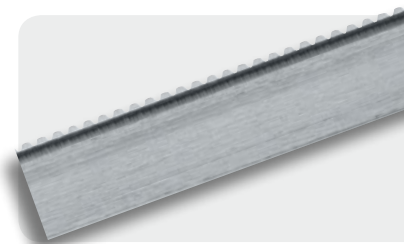
**12,50 x 0,45 mm**

**tooth 1,20 x 1,20 mm**

**double bevel with pre bevel on one side**

**2 x grinded**

**hardened cutting edge**



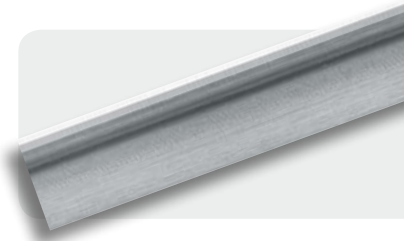
**smooth cutting edge**

**12,70 x 0,50 mm**

**double bevel with pre bevel on one side**

**3 x grinded**

**deeply hardened cutting edge**



**serrated cutting edge**

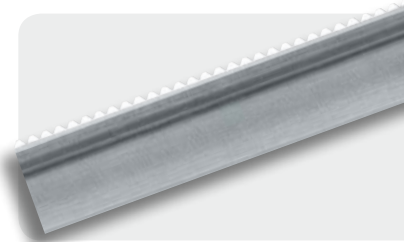
**12,70 x 0,50 mm**

**tooth 1,80 x 1,20 mm**

**double bevel with pre bevel on one side**

**3 x grinded**

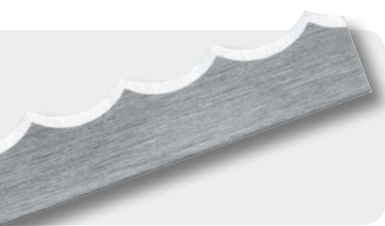
**deeply hardened cutting edge**



Other dimensions on request!



## Bandknives for cutting bread



width **10 mm, 12 mm, 15 mm**

thickness **0,45 mm**

wave **concave - 12 mm flat**

Other dimensions on request!

## Our production range also offers you:



**Skinner blades for machines like Maja, Weber, Townsend, Grasselli etc.**

**Bow saw blades**

**Portion cutter blades for machines like Treif, Grasselli etc.**

**Bread slicer blades for machines like Treif, Grasselli etc.**

**The company Richard Schmidt Söhne also have in their production range: Bandknives, straight knives, circular knives and cutter knives for the textile and foam industry.**

**At this occasion we want to pull your attention to the production range of our sister company Friedrich Bickenbach GmbH & Co. KG in the same building.**

The company Friedrich Bickenbach GmbH & Co. KG even assures you a production of high quality bandsaw blades for the wood and metal industry.

### **Richard Schmidt Söhne GmbH & Co. KG**

Richardstraße 10

42857 Remscheid (Germany)

Postfach 14 01 29

Tel.: +49 (0) 21 91 / 8 12 63

Fax: +49 (0) 21 91 / 8 31 08

info@bs-germany.de

www.bs-germany.de